

MCI Task Card 3 – Triage Unit Leader or Group Supervisor

OBJECTIVES:

1. Assure triaging of all victims in a safe and organized approach
2. Coordinate all triaging and victim movement to transportation or treatment area

ACTIONS:

- Manage the triage team function at the incident (should not perform task level triage on large incidents)
- Coordinate personnel/crews performing primary and secondary triage
- Maintain accountability of all triage personnel/crews
- Ensure rapid primary triage is performed – no more than 30 seconds per patient
- Ensure secondary triage point is established when necessary or that secondary triage is accomplished in Treatment Area
- Coordinates movement of triaged patients to treatment/collection/transport area. Set up Litter Bearers Teams (order personnel and equipment as appropriate to accomplish this)
- Ensures appropriate patient triage log is initiated and maintained. (multiple logs may need to be managed and information integrated depending on the scope of the incident)
- Relay triage information up the chain-of-command and updates status as needed
After triage is completed, assists treatment and transport supervisors/teams to locate their patients.
 - *In a hazardous incident, patients may not be able to be triaged until they are removed from the hazard zone and complete Decon.*
 - *Consider having crews utilize triage tags during secondary triage so that primary triage may be performed at appropriate speed.*
- Coordinate/set up Morgue Team Boss or Morgue Unit Leader

Triage & identify patients by category utilizing “Start program” method:

Red* Immediate life threat. (Must have rapid transport to survive.)

Yellow* Delayed (Injuries can wait 1-3 hours before transport.)

Green* Ambulatory (Injuries can wait 3+ hours before transport)

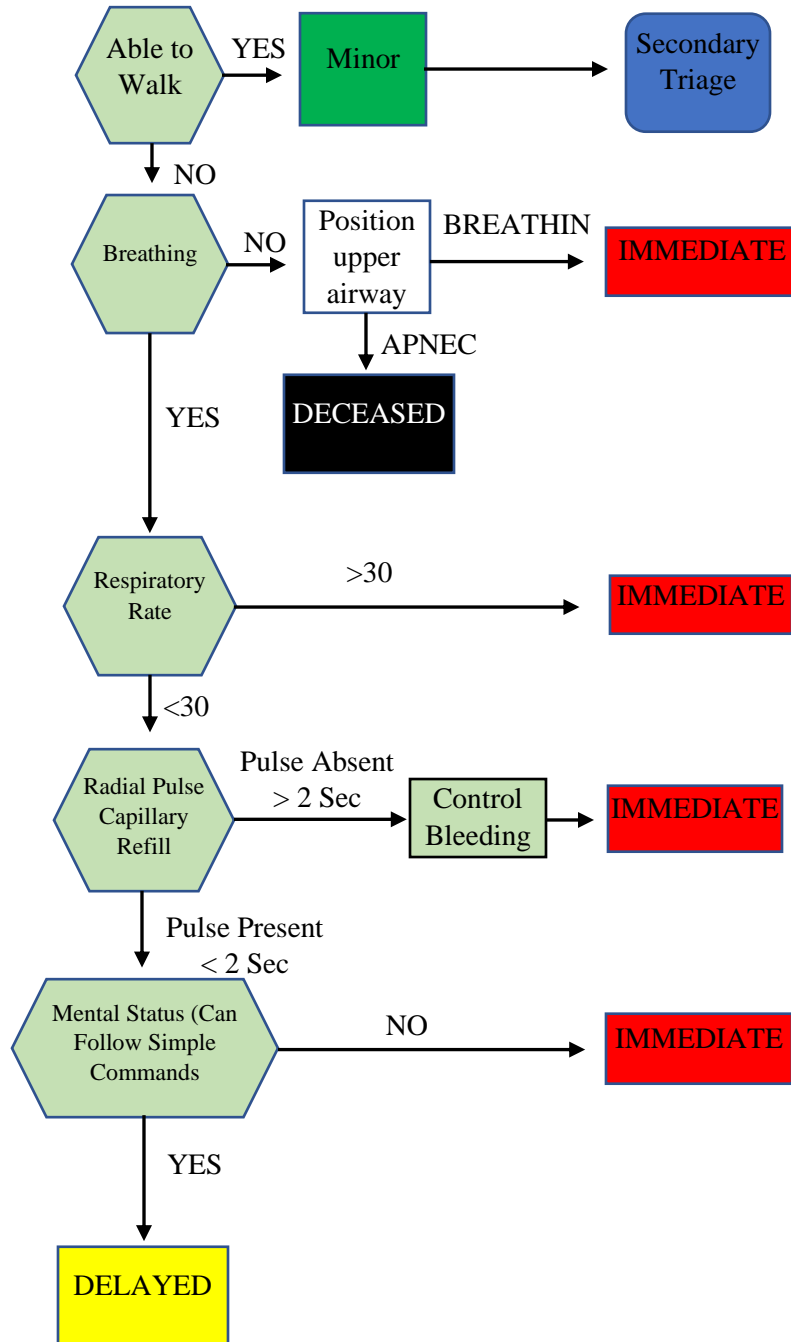
Black* Dead (No transport) Move only if needed to reach other live patients.

MCI Task Card 3 – Triage Unit Leader or Group Supervisor

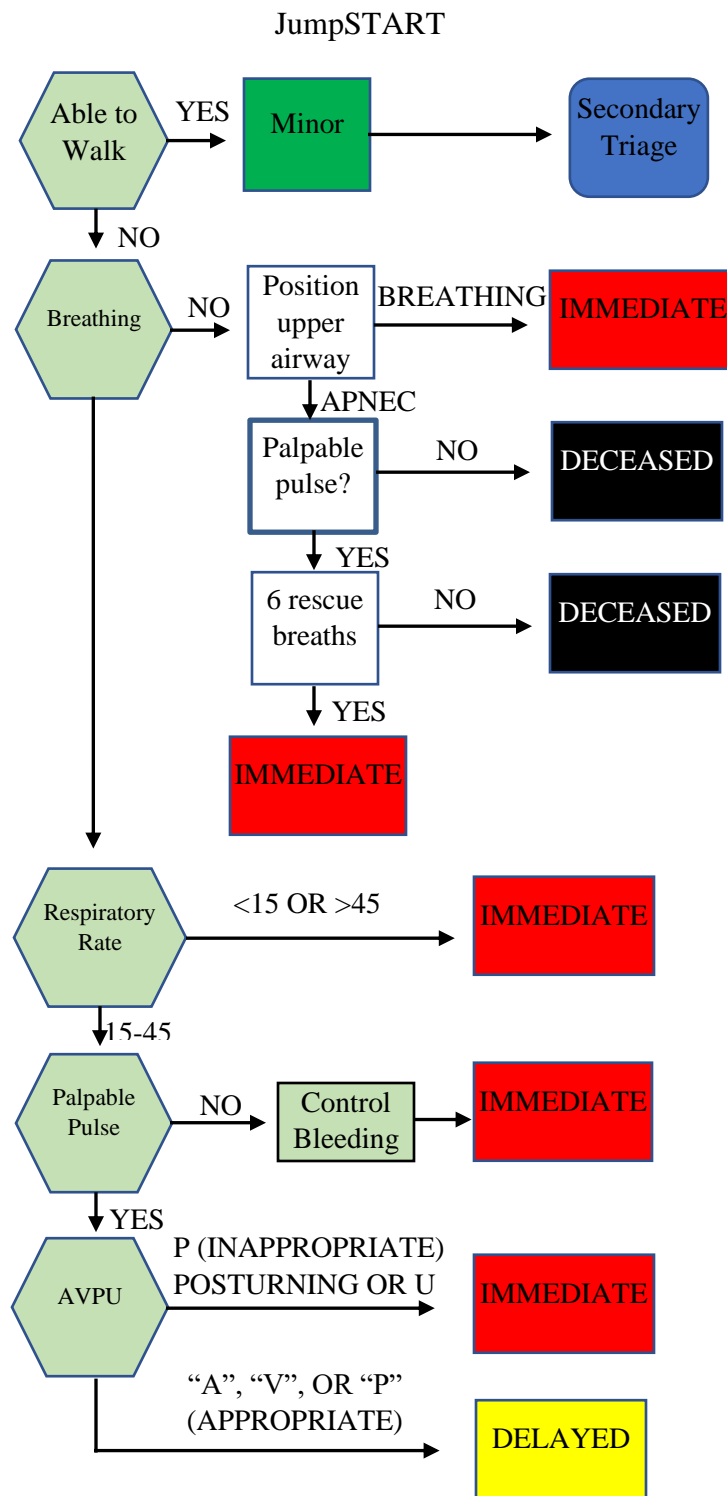
Triage log	Red	Yellow	Green	Black
Area				
Area				
Area				
Area				
Area				

MCI Task Card 3 – Triage Unit Leader or Group Supervisor

START
Simple triage and rapid transport
Remember **RPM** (Respirations, Perfusion, Mental Status)



MCI Task Card 3 – Triage Unit Leader or Group Supervisor



Neurological Assessment	
A	Alert
V	Responds to Verbal Stimuli
P	Responds to Painful Stimuli
U	Unresponsive to Noxious Stimuli